

Advance Your Cancer Drug Discovery

Axcelead offers an unparalleled portfolio of services, coupled with deep expertise and cutting-edge platforms, to bring reliable human extrapolation for your cancer drug discovery endeavors. Our commitment to excellence ensures timely and cost-effective delivery of results.

Fresh Human Tumor Samples

Full Range of Immuno-Profiling

Advanced Humanized Mouse Models

Orthotopic Tumor Models / *In Vivo* Imaging

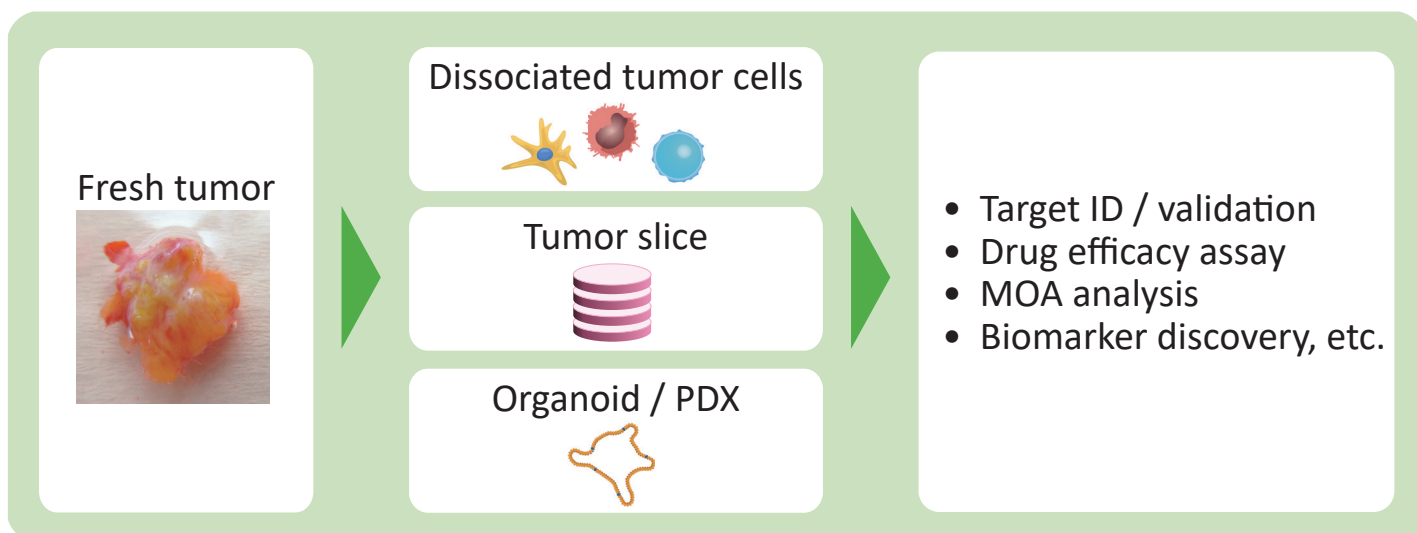
Cell-Based Assays

Combination Partner Analysis

Fresh Human Tumor Samples

More Precise Prediction of Efficacy in Clinical Setting

- Various types of tumors along with patient information and genetic mutation
- Tailored *in vivo* / *ex vivo* models prepared from fresh tumor



Full Range of Immuno-Profiling in Tumor

Deep-Diving into Tumor with Our Advanced Technology

- Analysis of tumor microenvironment or pharmacological response after drug treatment
- Analysis of comprehensive and spatial gene expression information

Flow cytometry

Spatial transcriptomics

Single cell / nuclear RNA-seq

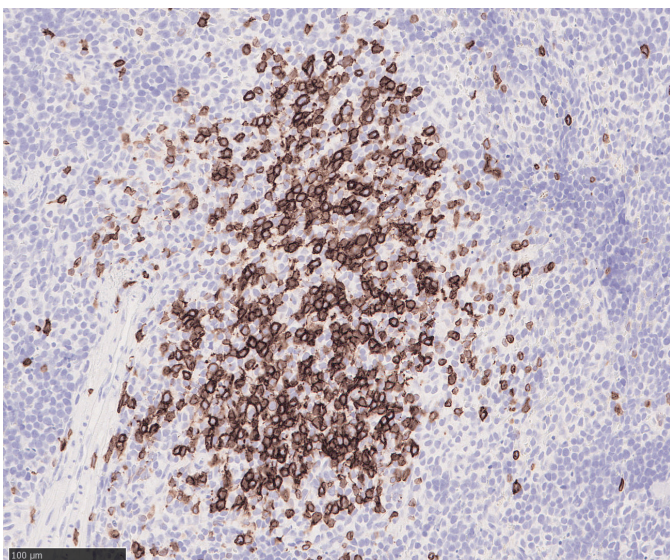
Immuno-histochemistry (IHC)

Advanced Humanized Mouse Models

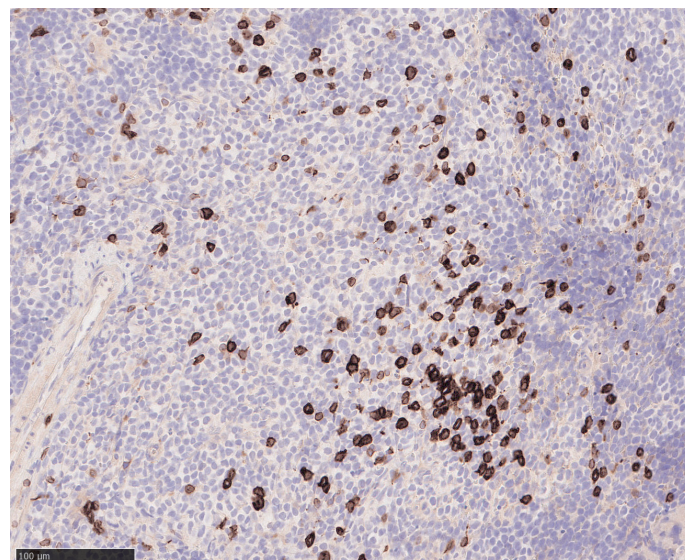
Enhance Translation of Immuno-Oncology Research

- Various NOG mouse models by cell transfer after irradiation and gene transfer
- Axcelead's original mouse model with co-existing T and NK cell
- Tailor-made humanized mouse models to suit your needs

Immune cells in spleen of a humanized mouse



T cells



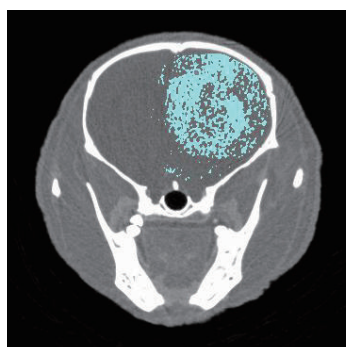
NK cells

Orthotopic Tumor Models / *In Vivo* Imaging

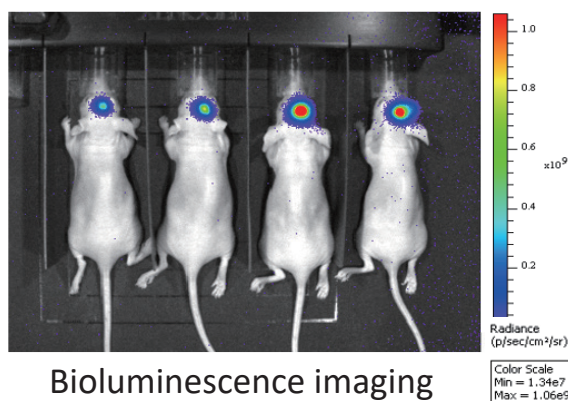
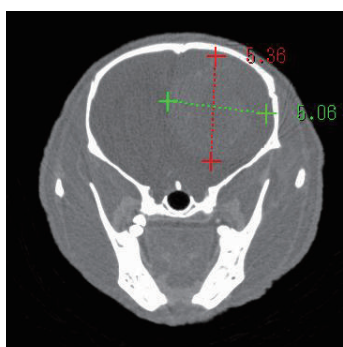
New Insights into Oncology Drug Discovery

- Orthotopic tumor models to assess pharmacological response
- Non-invasive, time-dependent *in vivo* imaging of orthotopic tumors
- Advanced platforms: X-ray CT, IVIS, ultrasound system, and more

Glioma model

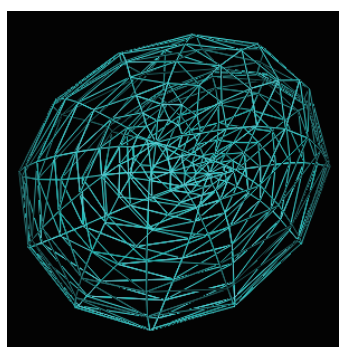
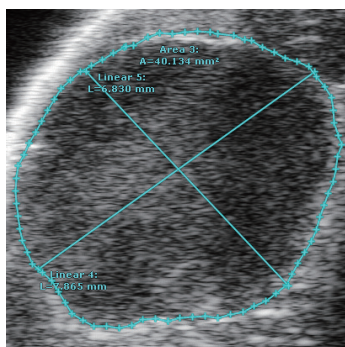


Brain imaging via CT scan



Bioluminescence imaging

Ovarian cancer model



Ultrasound scan-based imaging

Cell-Based Assays

A Range of Tailored Options for Your Target and Modality

- Various validated *in vitro* cellular assays, including immune cell assays
- Custom-built assay system, designed to meet your specific requirements

Killing
assay
(NK cell)

DNA
damage/
repair assay

T cell
exhaustion
assay

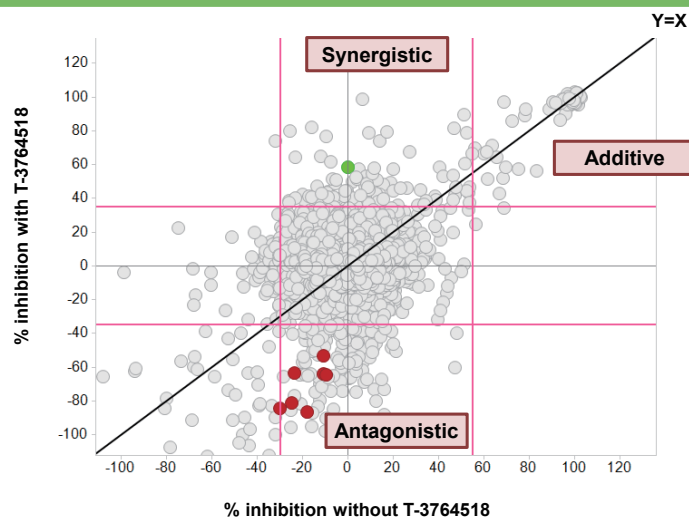
ADCC
or CDC
assay

Combination Partner Analysis

Expansion of Drug Development Strategy for Clinical Practice

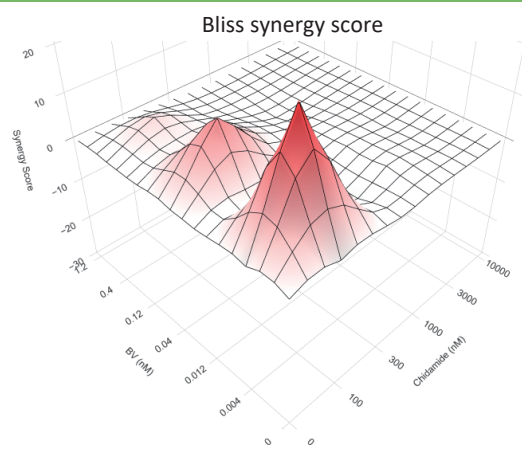
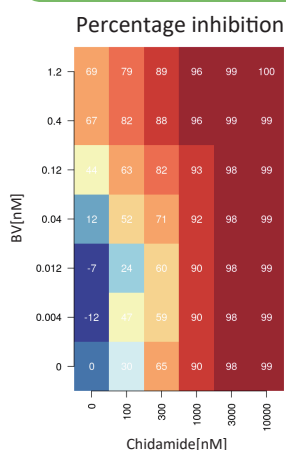
- Combination partner screening and validation platform
- Excellent in *in vivo* validation study and MOA analysis

Screening (annotation library)



PLoS ONE 12(7): e0181243

Matrix-based assay



Cancer Chemotherapy and Pharmacology 93, 2024

Integrated Drug Discovery Solution

Axcelead also offers fully integrated drug discovery services, from target discovery to IND-enabling translational research and beyond. Our experience and collaborative team facilitate each stage of your drug discovery project.



Axcelead Drug Discovery Partners, Inc.

[WEB] <https://www.axcelead-us.com>

[CONTACT] intl_contact@axcelead.com



WEB



LinkedIn

PHARM_ONC0001E_202303